



Food safety excellence

**SOLUS LISTERIA™**

## SOLUS LISTERIA™

Solus Listeria™ provides laboratories with an easy to use, cost effective and efficient method for the detection of Listeria in food and environmental samples.

Presented in an immunoassay format, Solus Listeria™ is versatile and can be used manually or in conjunction with automation. Performing to high standards, Solus Listeria™ is robust, reliable and validated by AFNOR to ISO 16140.

Laboratories with higher sample throughput are recommended to use the Solus automated method to improve laboratory workflow, significantly reducing technician time and increasing the capacity for testing.

### Solus Listeria™ Benefits

#### Rapid

- Results can be available in 44 hours
- 2 hours to presumptive negative/positive results post selective enrichment

#### Cost Effective

- Increased laboratory efficiency
- Reduced demand on resources
- Reduced waste (environmentally friendly)

#### Efficient

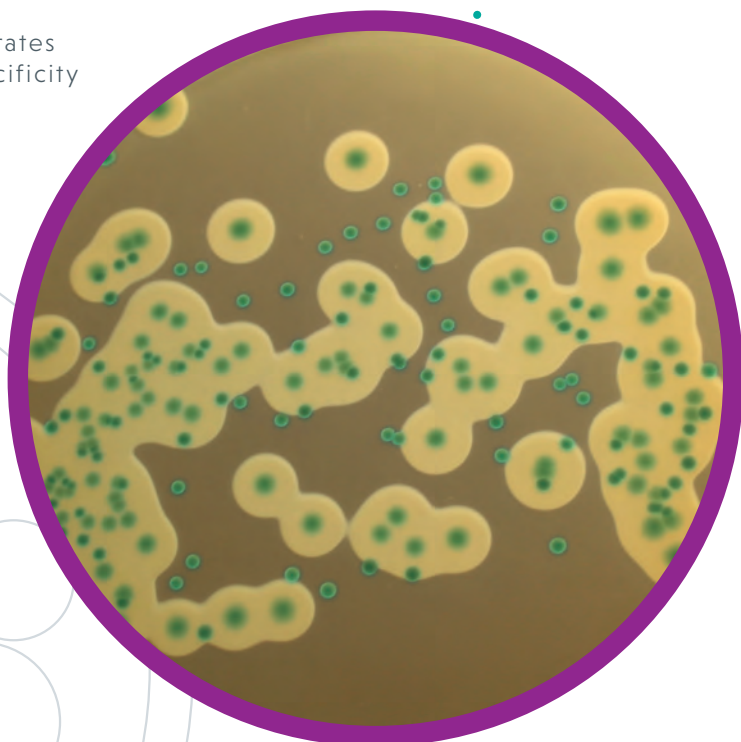
- Highly efficient when automated
- Significantly reduced technician time

#### Versatile

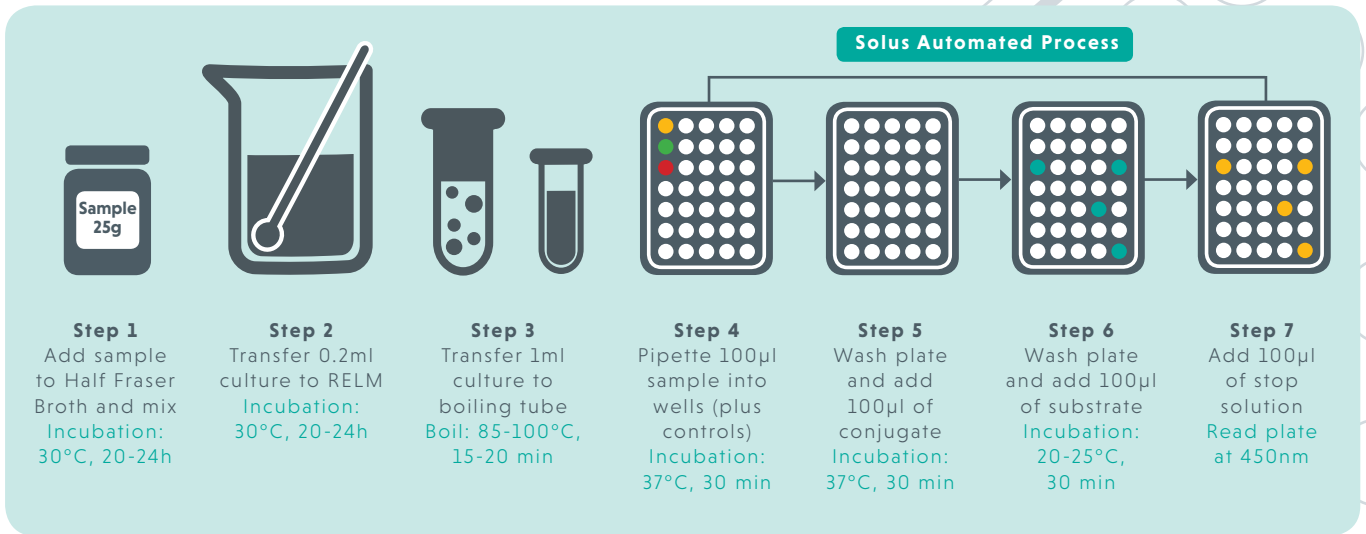
- Available in 96 or 480 well formats

#### Reliable

- Independent validation demonstrates high levels of sensitivity and specificity



## Test Methodology



Solus Scientific kits are manufactured in our own production facility to the highest standards which are tightly controlled within our ISO 9001 accredited quality system.

## ORDERING INFORMATION

Product Code	Product Description	Pack Size
LIS-0096S	Solus Listeria™ ELISA	96 wells
LIS-0480S	Solus Listeria™ ELISA	480 wells
FBH003/FBH005	Solus Half Fraser Broth	2kg, 10kg
RELM001	Solus RELM	500g
AGAR-OA020S	Solus Listeria™ Agar-OA Plates	20 plates
DS2000	DS2 Automation	1



Solus Listeria™ is validated to ISO 16140 and approved for use by AFNOR. Certificate number: SOL 37/02 – 06/13

Call Solus Scientific on: **+44 (0)1623 429 701**  
for more information or visit:  
**[www.solusscientific.com](http://www.solusscientific.com)**

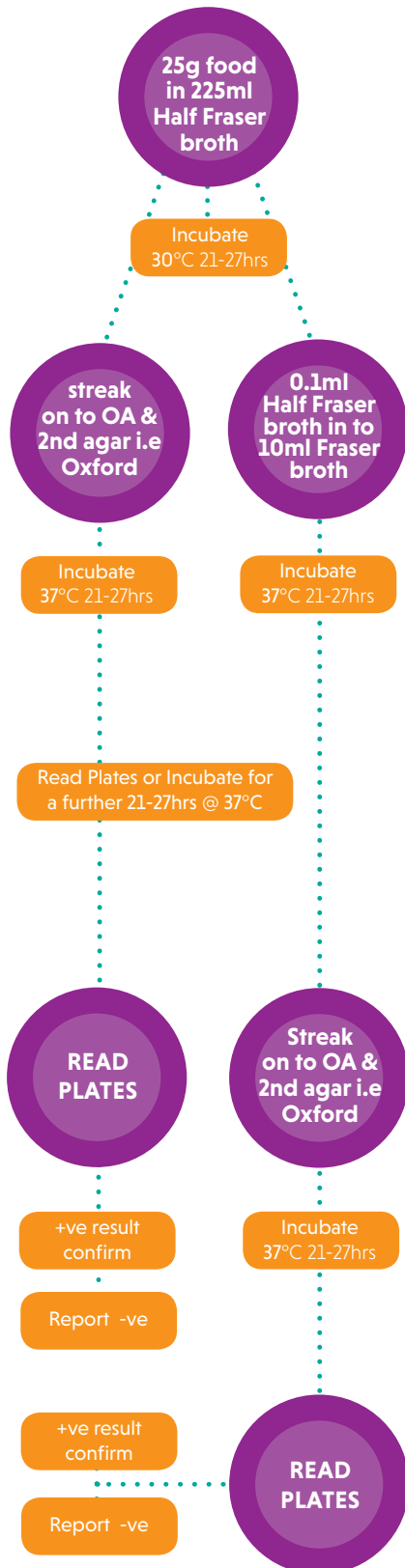


Certificate Number 11117  
ISO 9001



# Method Comparison Chart Compared with ISO 11290

## ISO 11290 Timescale



## Solus Listeria™ Timescale



**Solus Scientific Solutions Ltd**  
 9 Mansfield Networkcentre  
 Millennium Business Park, Concorde Way,  
 Mansfield, Nottinghamshire NG19 7JZ  
**Tel** +44 (0)1623 429701  
**Fax** +44 (0)1623 620977  
**Email** enquiries@solusscientific.com  
**Web** www.solusscientific.com